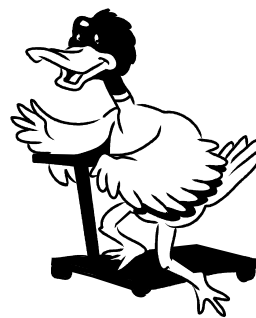


Write the row totals and column totals.



N20

adding three numbers

1	3	2	
4	2	1	
3	2	4	

5	3	2	
3	1	6	
4	3	5	

3	2	5	
1	7	4	
2	6	1	

5	8	3	
3	2	7	
9	1	6	

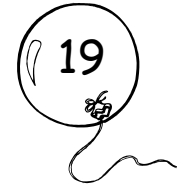
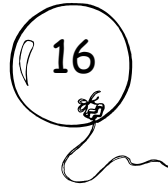
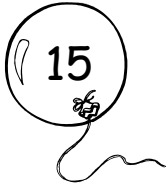
Match the sums with their answers

$9 + 4 + 6 =$

$7 + 5 + 4 =$

$7 + 5 + 3 =$

$3 + 8 + 6 =$

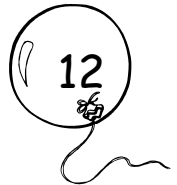
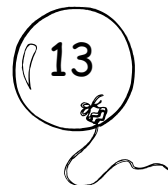


$2 + 10 + 1 =$

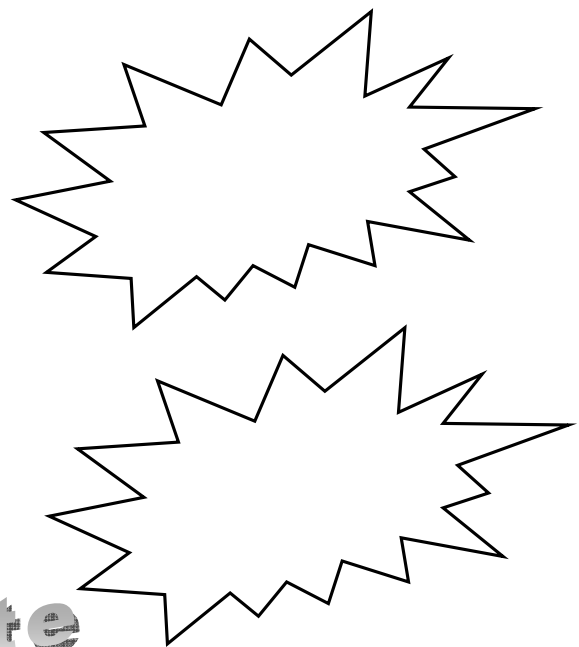
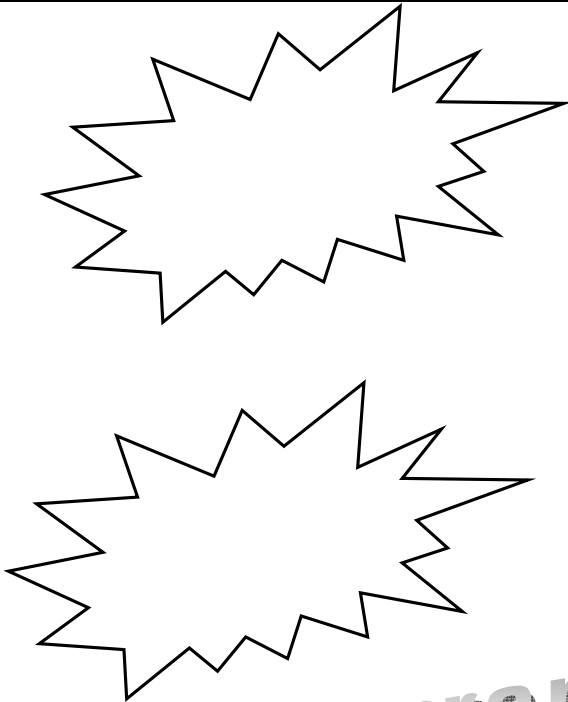
$5 + 5 + 4 =$

$4 + 4 + 4 =$

$8 + 5 + 4 =$



☺ Make up your own additions with three numbers.



1.

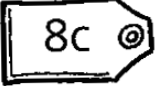
2.

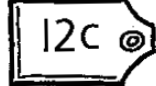
3.

4.

4

Circle 3 coins to make each amount.

5.  5c, 1c, 1c, 1c, 2c, 2c

6.  5c, 2c, 5c, 1c, 5c, 1c

2

7. Join each cloud to the correct total.

Clouds with numbers: (7, 3, 4), (6, 4, 2), (5, 3, 5), (8, 7, 2)

Stars with numbers: 14, 13, 12, 17

4

Choose numbers to make each addition correct.

Clouds with numbers: 6, 8, 5, 4, 2

8. + + = 18

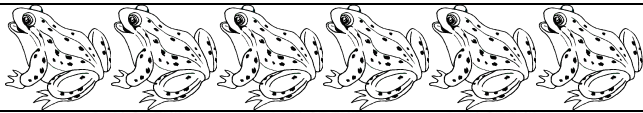

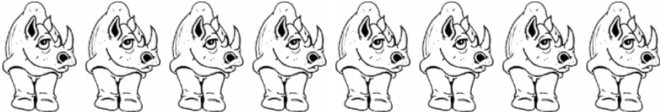






9. + + = 16

4

Score: / 14

Total:

Colour the **even** amounts **red** and the **odd** amounts **blue**.

	How many?
	
	
	
	
	
	
	
	
	

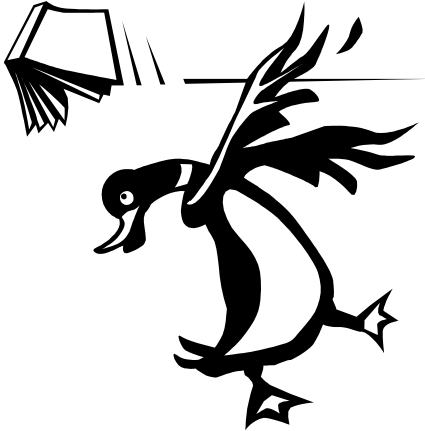
Colour the correct answer:

2 is an even odd number.

7 is an even odd number.

5 is an even odd number.

4 is an even odd number.

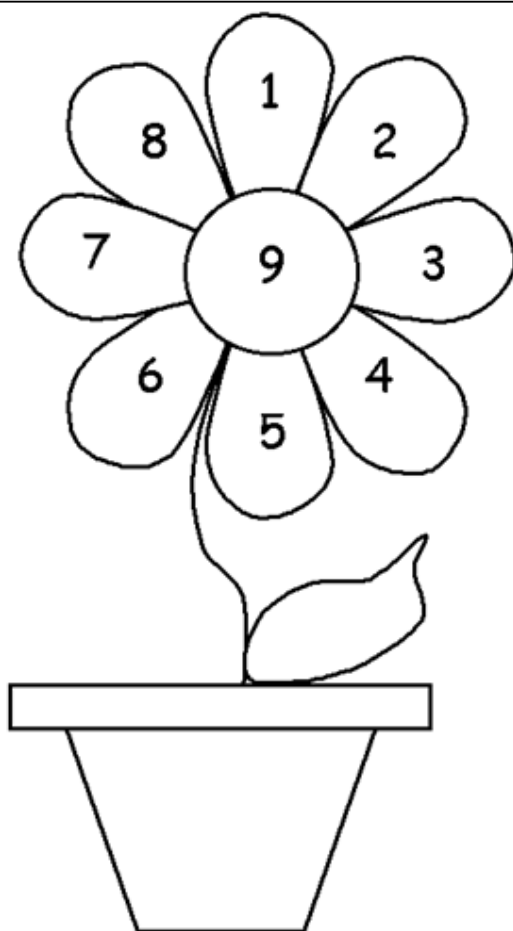
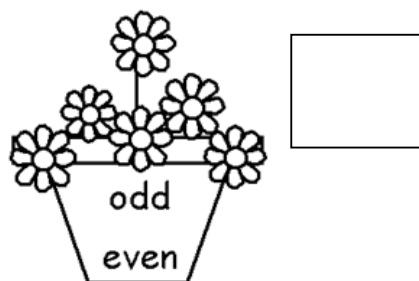
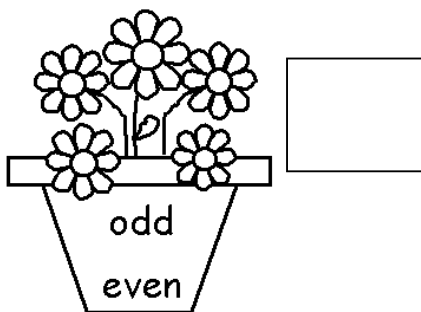
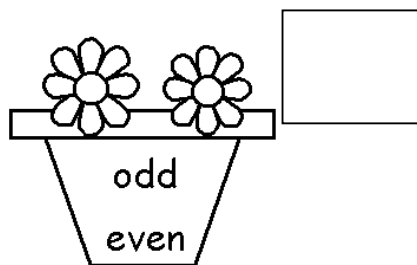
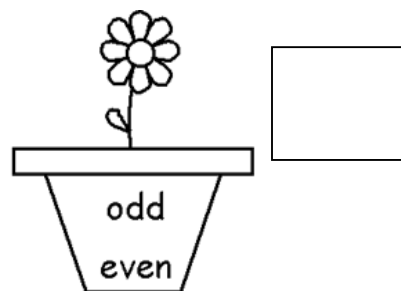
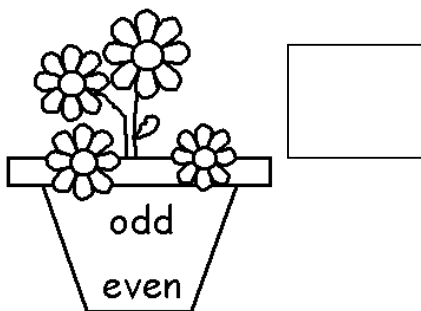
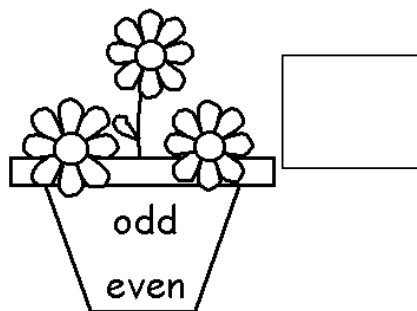


Odd and Even

N22

- Colour and count the flowers.
- Write how many flowers there are in the box.
- Circle odd or even.

www.KidZone.ws



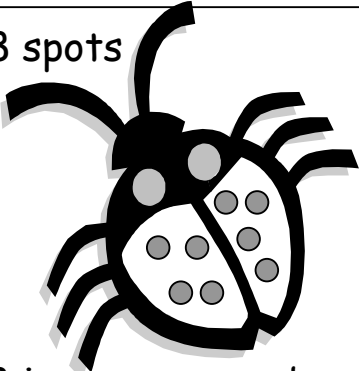
1. Colour the even numbers blue.
2. Colour the odd numbers yellow.
3. Write the even numbers:

4. Write the odd numbers:

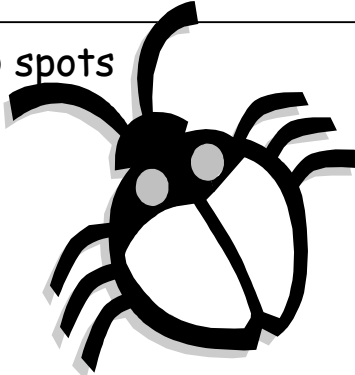
Odd and even numbers

Draw the spots on the back of the ladybird, one on each side to show if the number is odd or even.

8 spots

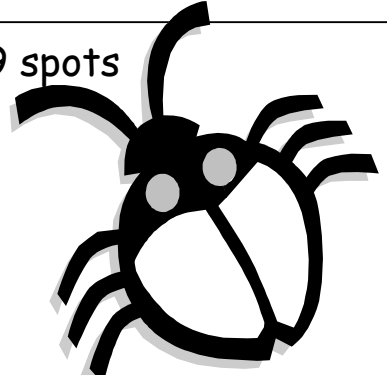
8 is an even number.

5 spots



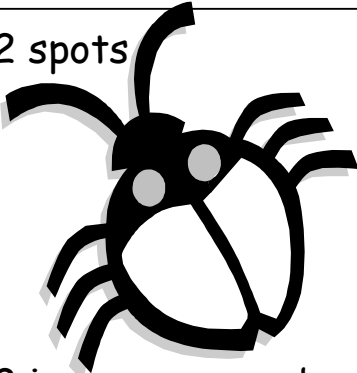
5 is an _____ number.

9 spots



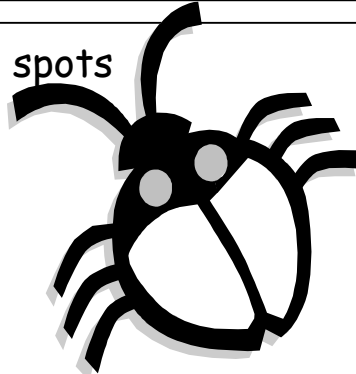
9 is an _____ number.

12 spots



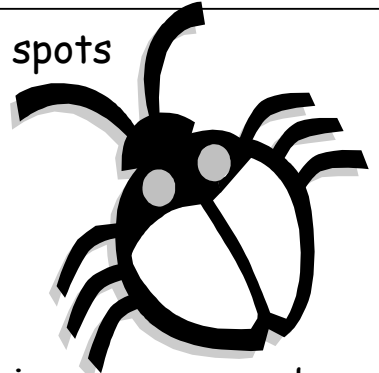
12 is an _____ number

10 spots



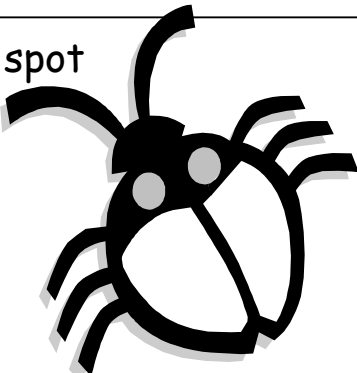
10 is an _____ number

3 spots



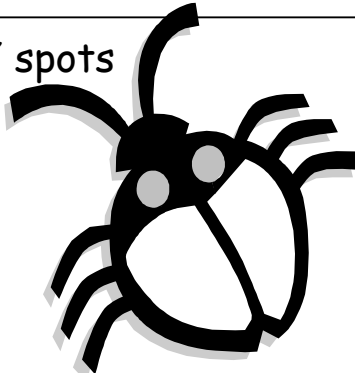
3 is an _____ number

1 spot



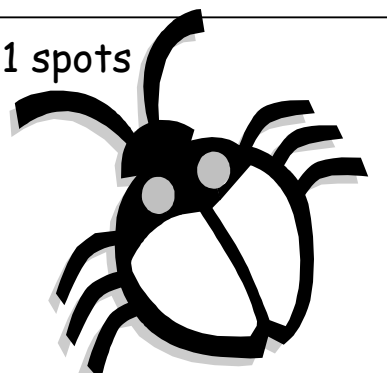
1 is an _____ number.

7 spots



7 is an _____ number.

11 spots



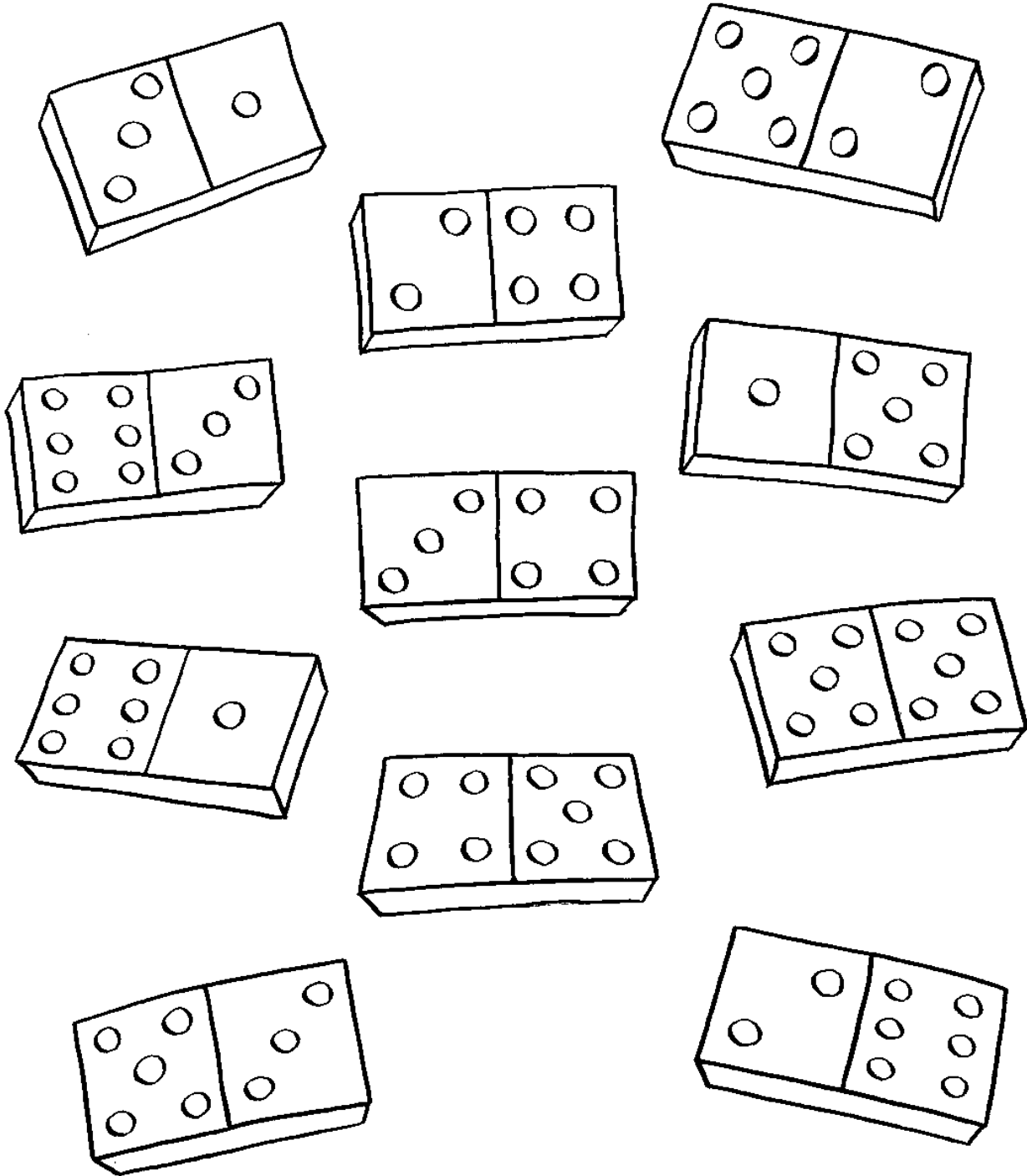
11 is an _____ number

Odd and Even

N22

Colour the dominoes...

- **Blue** if they have an **even** number of spots on both sides
- **Pink** if they have an **odd** of spots on boths sides
- **Yellow** if they have an **even** number of spots on one side and an **odd** number of spots on the other side.



1. 2. 3. 4.

4

5. Write the missing even numbers.

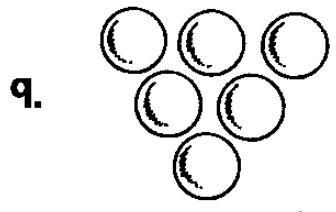
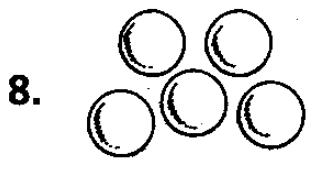
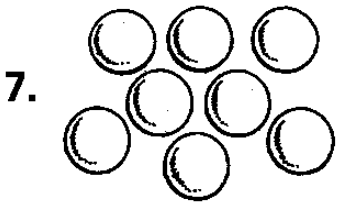
- 2 4 6 14

6. Write the missing odd numbers.

- 1 3 9 11

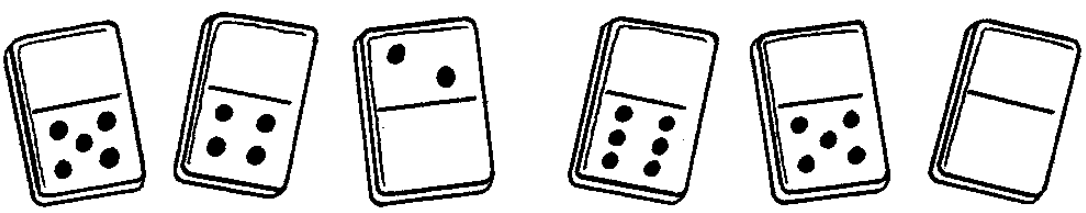
4

Write even or odd.



3

Draw dots on each domino to complete each set.



4

Score: / 17

Total: